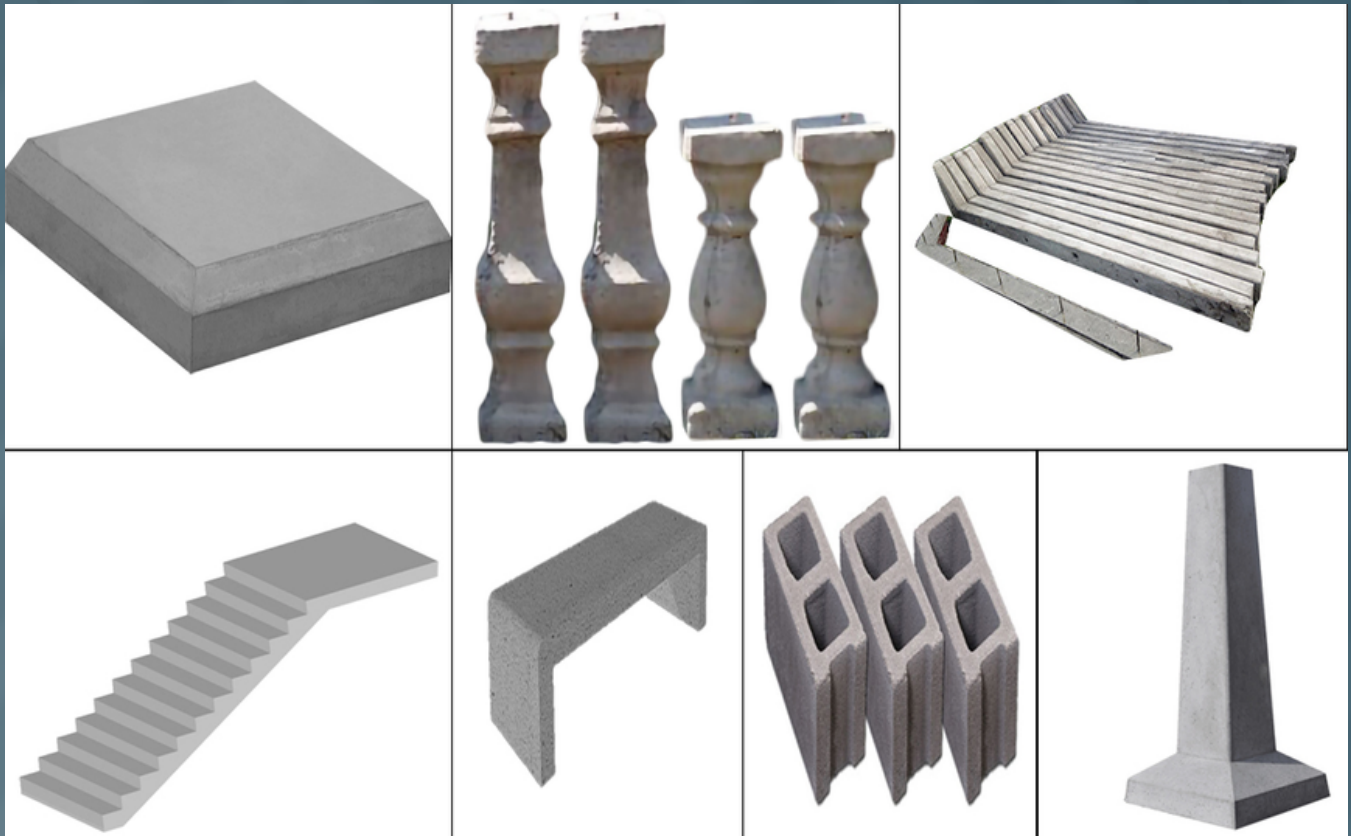




VICTORIA
Precast Concrete

VICTORIA PRECAST CONCRETE



Serving Kisumu Residents and commercial builders by providing precast concrete products that are custom manufactured locally. We are well known for our good quality products and services that we provide.



Spindles

- Concrete Spindles used for structural and decorative support.
- Available in Different Sizes.
- Faster Installation Structures.
- Sustainable Construction.
- Durability/ Long Life/ Low Maintenance.
- Moisture Resistance.

Cement Blocks

- Standard Concrete Block.
- Faster installation structures.
- Sustainable Construction.
- Durability/ Long Life/ Low Maintenance.
- Moisture Resistance.



Column Caps

- Provide Additional Surface Area.
- Typically Used for Decoration.
- Faster Installation Structures.
- Sustainable Construction.
- Durability/ Long Life/ Low Maintenance.
- Moisture Resistance.

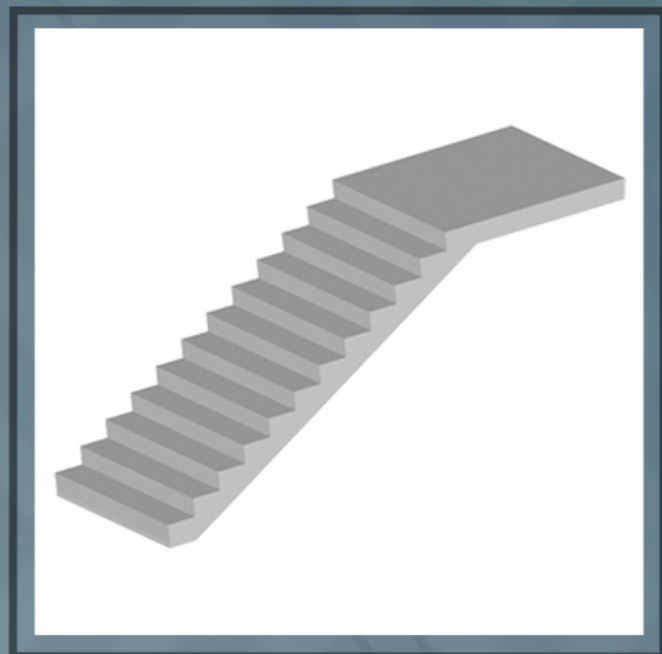


Concrete Benches

- Traditional and Durable Pieces of Outdoor Furnishings.
- Can be Used in Many Places.
- Faster Installation Structures.
- Sustainable Construction.
- Low Maintenance.
- Moisture Resistance.

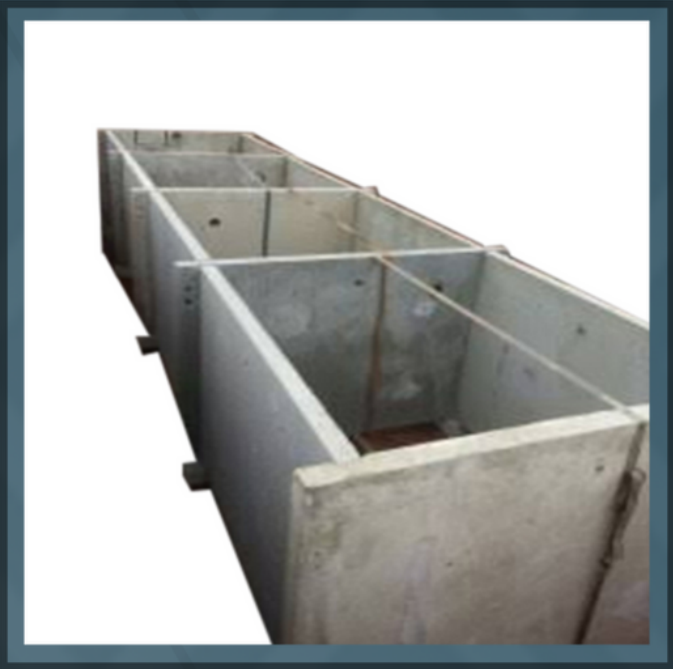
Concrete Septic Tanks

- The Strongest available, and have a Lower Likelihood of Breaking Cracking or Floating.
- Faster Installation Structures.
- Sustainable Construction.
- Moisture Resistance.



Concrete Stairs

- The Sturdiest and Safest Method of Providing Access to Basements and Upper Floor.
- Lofts in both Commercial and Residential Projects.
- Faster Installation Structures.



Concrete Water Tanks

- Used for Storing Water.
- Can be made in Different Shapes.
- Made of Reinforced Concrete.
- Faster Installation Structures.
- Durability/ Long Life/ Low Maintenance.

Corner Blocks

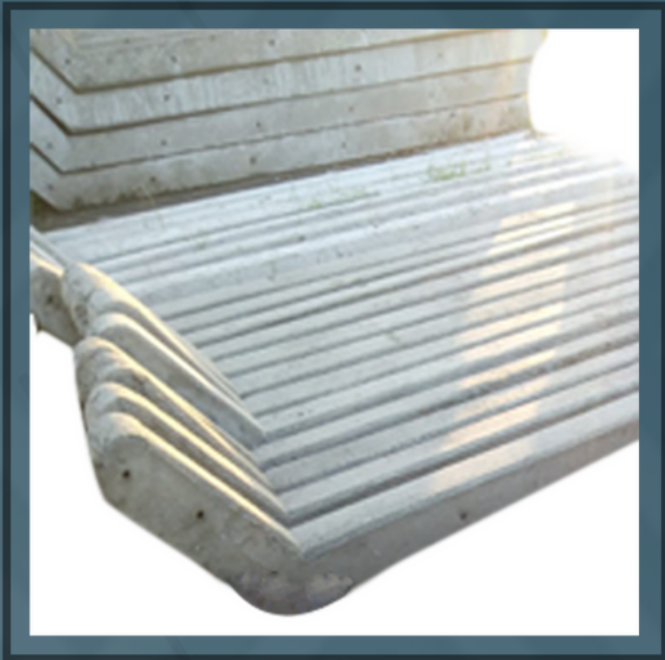
- Used at the end or Corners of Masonry.
- Faster Installation Structures
- Sustainable Construction
- Durability/ Long Life/ Low Maintenance.
- Moisture Resistance



Culverts

- The best long term solution for carrying large volumes of water for drainage, storm water run off, roadways and others.
- Faster Installation Structures.
- Sustainable Construction.
- Durability/ Low Maintenance.
- Moisture Resistance.



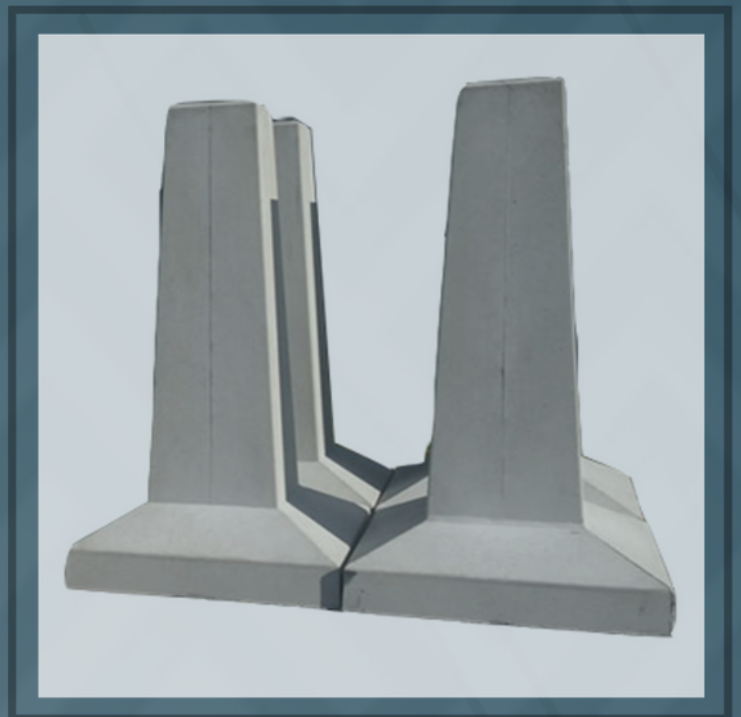


Fence Posts

- Much Stronger and Lasts Longer Than Wood.
- Faster Installation Structures.
- Sustainable Construction.
- Durability/ Low Maintenance.
- Moisture Resistance.

Pier Footings

- Used to Transfer the Building Load to the Soil.
- Helps to Support Beams or Columns.
- Faster Installation Structures.



Slab Block


- Concrete Slab Block, Solid.
- Faster installation structures.
- Sustainable Construction.
- Durability/ Long Life/ Low Maintenance.
- Moisture Resistance.



VICTORIA
Precast Concrete

For More Information Connect with us

 info@victoriaprecast.com

 +254 722 253327

 Ahero, Kenya